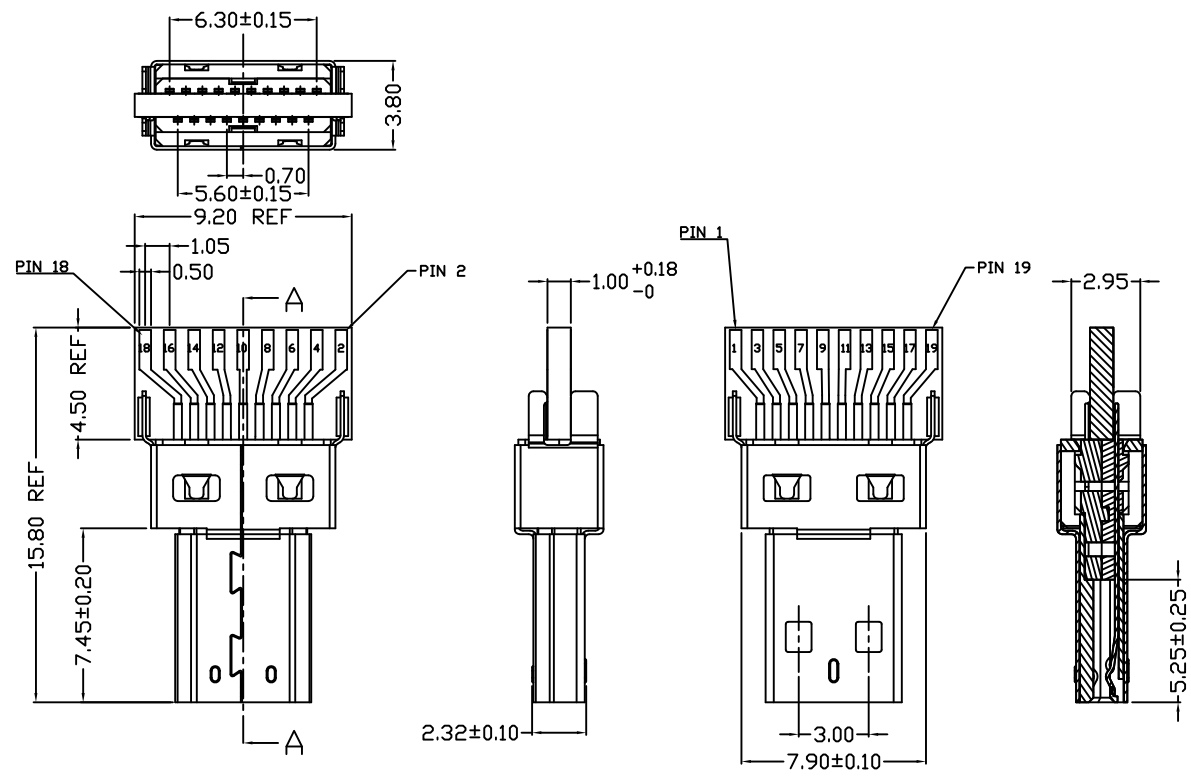
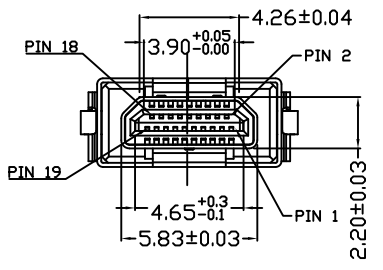


REV.	ZONE	DESCRIPTION	DESIGN	DATE
A		初版发行	Jack	13.06.25



- 电气性能:
1. 额定电压: 30V
 2. 额定电流: 0.8A
 3. 接触阻抗: 10 毫欧
 4. 高压: 未插入 250V 插入 150V
 5. 绝缘阻抗: 未插入 100兆欧 插入 10兆欧
- 机械性能:
1. 插入力: 44N max
 2. 拔出力: 5N min
 3. 插拔寿命: 5000 cycles

⑤	PCB	1	T=1.0mm	
④	SHELL	1	C2680-H T=0.15mm	Plating: Ni100u"; Au#u"
③	Housing	1	LCP (black)	UL94V-0
②	10P CONTACT	1	C5191-H T=0.15mm	Plating: Ni100u"; Sn:100u" Au#u"
①	9P CONTACT	1	C5191-H T=0.15mm	Plating: Ni100u"; Sn:100u" Au#u"
ITEM	PART NAME	Q'TY/EA	MATERIALS	NOTE



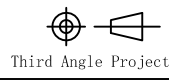
PIN NO	SIGNAL NO	PIN NO	SIGNAL NO
PIN 1	Hot Plug Detect	PIN 2	Utility
PIN 3	TMS Data2+	PIN 4	TMS Data2 Shield
PIN 5	TMS Data2-	PIN 6	TMS Data1+
PIN 7	TMS Data1 Shield	PIN 8	TMS Data1-
PIN 9	TMS Data0+	PIN 10	TMS Data0 Shield
PIN 11	TMS Data0-	PIN 12	TMS Clock+
PIN 13	TMS Clock Shield	PIN 14	TMS Clock-
PIN 15	CEC	PIN 16	DDC/CEC Ground
PIN 17	SCL	PIN 18	SDA
PIN 19	+5V Power		

Unless otherwise specified tolerances are

X.X	±0.25
X.XX	±0.20
X.XXX	±0.15
X°	±2.0°
X.X°	±1.0°

Coorle Technology

DRAW NO.		DATE	13.06.25	DRAW NAME:	HDMI D TYPE 公头 焊线式+PCB板 19P
DWN	Jack			P/N :	
CHK					
APVD					



FINISH	MATERIAL	UNIT	SCALE	WEIGHT	REV	SHEET
		mm	1:1		A	1 OF 1